

BLMK response to the NHS LTP

Jane Meggitt

19 September, 2019



What we know about health in BLMK



We could be doing better on circulatory and respiratory diseases.

Hospital admissions for **asthma** in <19 year olds are high in MK and Luton; admissions for **COPD** are high everywhere except Luton.



Coronary heart disease admission rates are **higher** than nationally in all three CCGs.

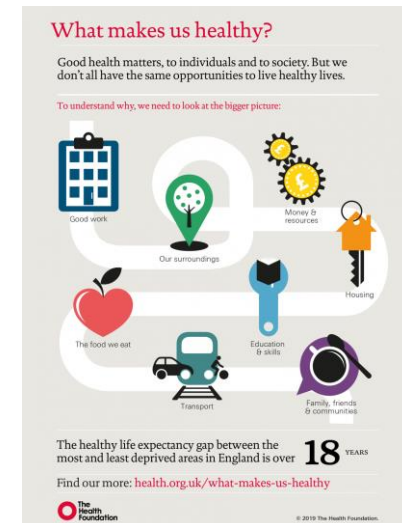
We need to address considerable health inequalities.



Babies born in the most affluent parts of BLMK will live longer than those born in the most deprived areas. The biggest gap for men is in **Bedford Borough (10 years)** and the smallest is for women in **Luton (6 years)**.

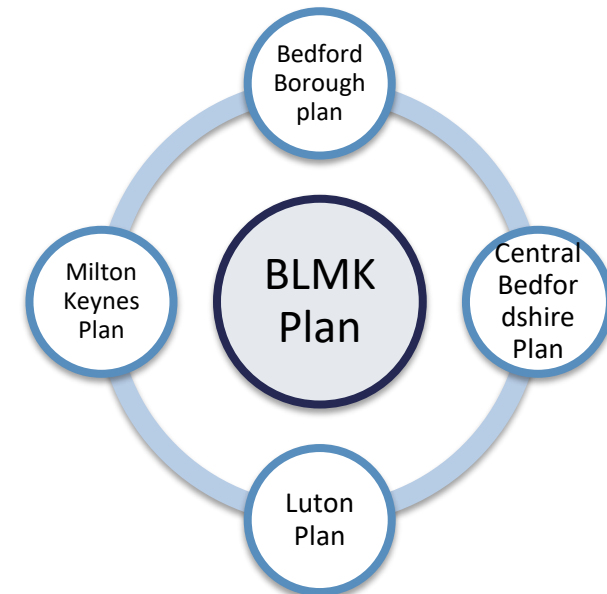
Issues such as employment, housing and diet determine 60% or more of health outcomes

In the future, BLMK's population will grow and age – we are doing work on the impact of these changes.



Where are we?

- Working on BLMK response to NHS LTP which takes into account history of working together, what we know from Joint Strategic Needs Assessments and existing Health and Wellbeing Strategies
- Endeavouring to engage all partners
- Our ambition is to deliver a system that balances resources and delivers the best possible health outcomes
- Local place-based plans are the bedrock – a key chapter looks at the great work colleagues in Public Health have done on wider determinants, health promotion and prevention and health inequalities.



What is in the plan?

Content builds on all the good work that has happened to date in areas such as Primary Care Networks, social prescribing and integrated health and care hubs.

Sections on

Population health (including health inequalities)

Primary Care Networks and Community Health Services

Improvements to urgent and emergency care

Personalisation

Online and video consultations for outpatients and primary care

Cancer

Mental Health

Shorter waits for planned care.

Sections on

Children and Young People

Learning Disability and Autism

CVD, Stroke, respiratory, diabetes

Workforce

Finance

Estates

Digital

Growth Agenda

Content is wide-ranging with an overarching theme of focusing on holistic needs of individuals and trying to be as proactive in their care as possible, with hospital a last resort.

Engagement Approach

We have drawn on learnings from previous engagement, including that done by Healthwatch earlier in the year.

This has been supplemented by going to the places where people are including:

- Shopping Centres
- Libraries
- Sports Centres
- Buses
- Group meetings/ events

Thoughts have been gathered on what would help people stay well and what they expect of a future NHS as well as a more detailed survey.

This has given us a great base to build on, continuing our conversations with local people to co-design future services.



Engagement – emerging themes

- Accessibility to a range of services
- GP services and waiting times to see a doctor
- Reliable information and support for healthier lifestyles to combat obesity and preventable conditions
- More support and services for children and young people's mental health
- Making greater use of technology for consultation, information and sign posting
- Joined up services and care support by shared records
- Protecting NHS services and investment
- More clinicians and support for those already working in the NHS

