

**NHS Clinical Commissioning
Groups want to work together
in the future**

What do you think?



Questionnaire



Who we are



We are 3 organisations called:

- Bedfordshire Clinical Commissioning Group
- Luton Clinical Commissioning Group
- Milton Keynes Clinical Commissioning Group

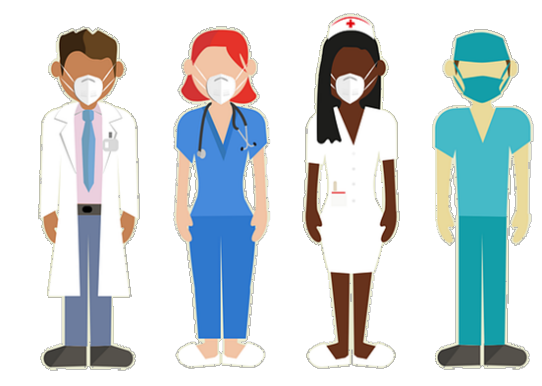
What we do



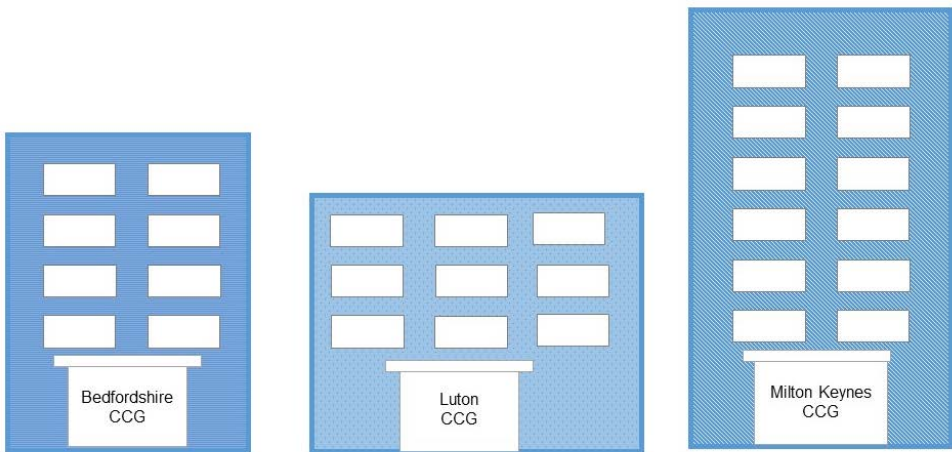
We run healthcare care services in Bedfordshire, Luton and Milton Keynes.

There are lots of Healthcare services including

- Doctors
- Nurses
- Hospitals
- Mental health services

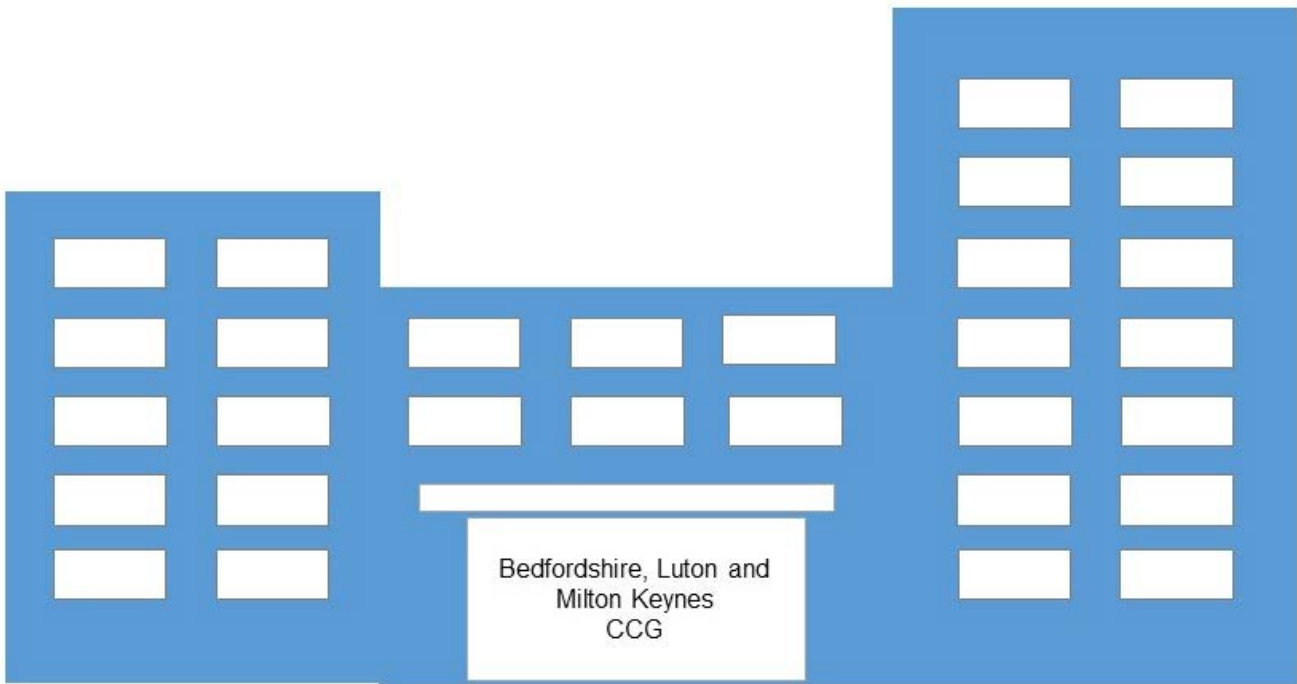


Our plan



We want to join the three organisations together and become one big organisation.

The new organisation will be called Bedfordshire, Luton and Milton Keynes Clinical Commissioning Group.



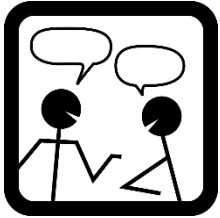
Changes in our organisations



We want



- To provide better services for everyone
- Patients and carers to be happy with their care
- People to tell us how to do things better by giving feedback
- To have more money to spend on our services so they last for a long time
- Everyone to work together to make healthcare better
- Staff to have more time to make health services safe and better and not have to spend time at meetings
- Staff to have the right equipment to help them do their jobs well
- Staff to be happy and know how to do their jobs well





Please read pages 1 to 4 of this document



Then tell us your views by answering these questions.



We need your answers by Sunday 13 September 2020.

Please click on the box next to your answer to show a tick

Question 1

Where do you live?



Bedford Borough

Central Bedfordshire

Luton

Milton Keynes

Question 2

Do you think the idea to join the three organisations together to become one big organisation is right?



Yes

No

Not sure

Question 3

Do you understand why we want to become one big organisation?



Yes

No

Not sure

Question 4

What can we do to improve healthcare services?

About you

Please answer these questions about you. This helps us to be sure that we are getting the views of all different communities



5. How old are you?

6. What is your sex?

Female

Male

Prefer not to say

7. Are you disabled?



Yes

No

Prefer not to say

8. Are you...



Heterosexual or straight – attracted to people of opposite sex

Gay or lesbian – attracted to people of same sex

Bisexual – attracted to both men and women

Prefer not to say

9. Are you...



Arab

Asian/Asian British (Indian, Pakistani, Bangladeshi, Chinese)

Black/African/Caribbean/Black British

Mixed/multiple ethnic group

White - (British, Irish, Gypsy or Irish traveller)

Prefer not to say

You only need to answer the questions below if you want to take part in other surveys or get information from us in the future

Name

Email address

Please save your survey form

Send your survey form by email to

blmkcc.feedback@nhs.net

Please do this by Sunday 13 September 2020

